



1900 Wellworth Ave. • Jackson, MI 49203
517-787-2100

Submittal Data

CMA1436SG-1

Project Name:	
Location:	
Engineer:	
Submitted to:	
Submitted by:	
Reference:	

Approval:	
Date:	
Construction:	
Unit #:	
Drawing #:	

Performance Data

Power supply	Ph-V-Hz	
<u>Cooling</u>		
Capacity	Btu/h	34,000
Input	W	2820
Rated current	A	13.5
EER	Btu/w	12.2
SEER	Btu/w	14.5
MINIMUM CIRCUIT AMPACITY	A	16
MAX.FUSE	A	25

Compressor Electrical

Model	ASH280DG-C8DU	
Type	ROTARY	
Brand	HIGHLY	
Capacity	Btu/h	28182
Input	W	2700
Rated current(RLA)	A	11.9
Coil Treatment	/	
Thermal protector position	Internal	
Connection wiring	18ga 2 Conductor	

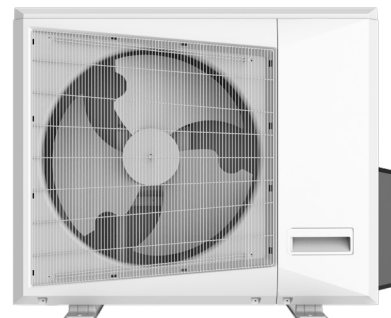
Air Flow & Noise Level

Outdoor air flow	CFM	2750
Outdoor noise level	dB(A)	58

Thermostat type Standard 24v Control

Fan Motor

Model	DQ-DRN-310-90-8	
Brand	Yongan	
Input	W	115
RLA	A	2.03
LRA	A	/
Winding Resistance	Ω	54
Capacitor	uF	6
Speed	r/min	850



Ambient Temperature

Outdoor(cooling) Deg. F 65-109

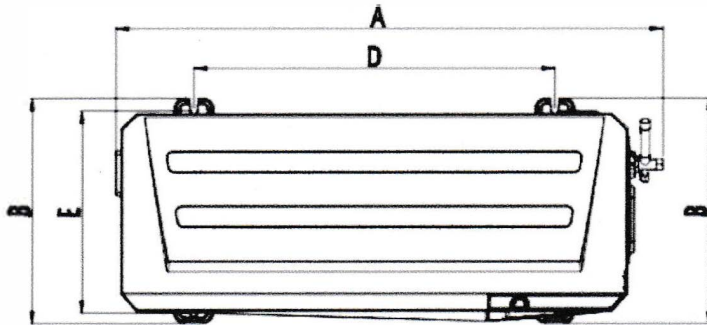
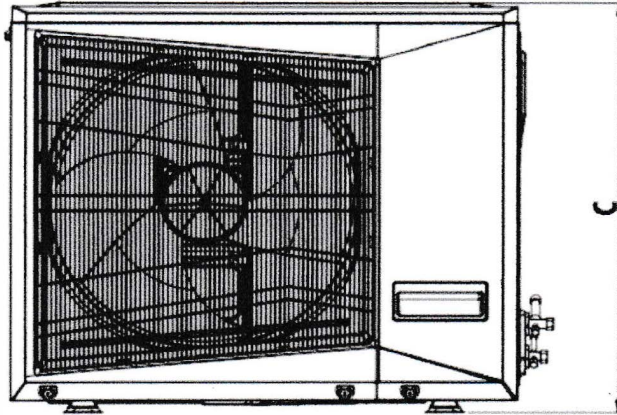
System Operational Data

Design pressure	PSIG Hi (540) Lo(300)	
Refrigerant oil/oil charge	ml	570
Refrigerant type/charge	oz	126.99
Refrigerant precharge	g	3600
Additional charge per ft.	oz	0.32
Liquid side/ Gas side	in	3/8" / 3/4"
Max. length	ft	82
Max. height difference	ft	33

Dimensional Data

Dimension(W*D*H)	inch	40.0x17.5x31.9
Packing (W*D*H)	inch	42.3x19.5x34.5
Net/Gross weight	lbs.	141.1/152.1

CMA14--SG



Model	A	B	C	D	E
36K	40.0	17.5	31.9	26.4	15.2

Accessories

83907	Surge Protection
83916	Disconnect with internal surge
83335	60 amp Unfused Disconnect
93642	Bracket
93540	Condenser Pad

**Use of piston-style metering device is typical.
Where TXV's are used, a 15% bleed-type is required.
Use of Non-bleed TXV's will void warranty.**

Bleed-Style TXV's for use with CMA14-SERIES and Comfort-Aire Coils/Air Handlers:

- **67304001** TXV for use with **CMA14 1.0T – 3.0T**
 - (C,M)CG*P Coils
 - HMG/HCG Air Handlers
- **4203** TXV for use with **CMA14 1.5T – 3.0T**
 - (C,M)CG*M Coils
 - HWCG Hydronic Air Handlers